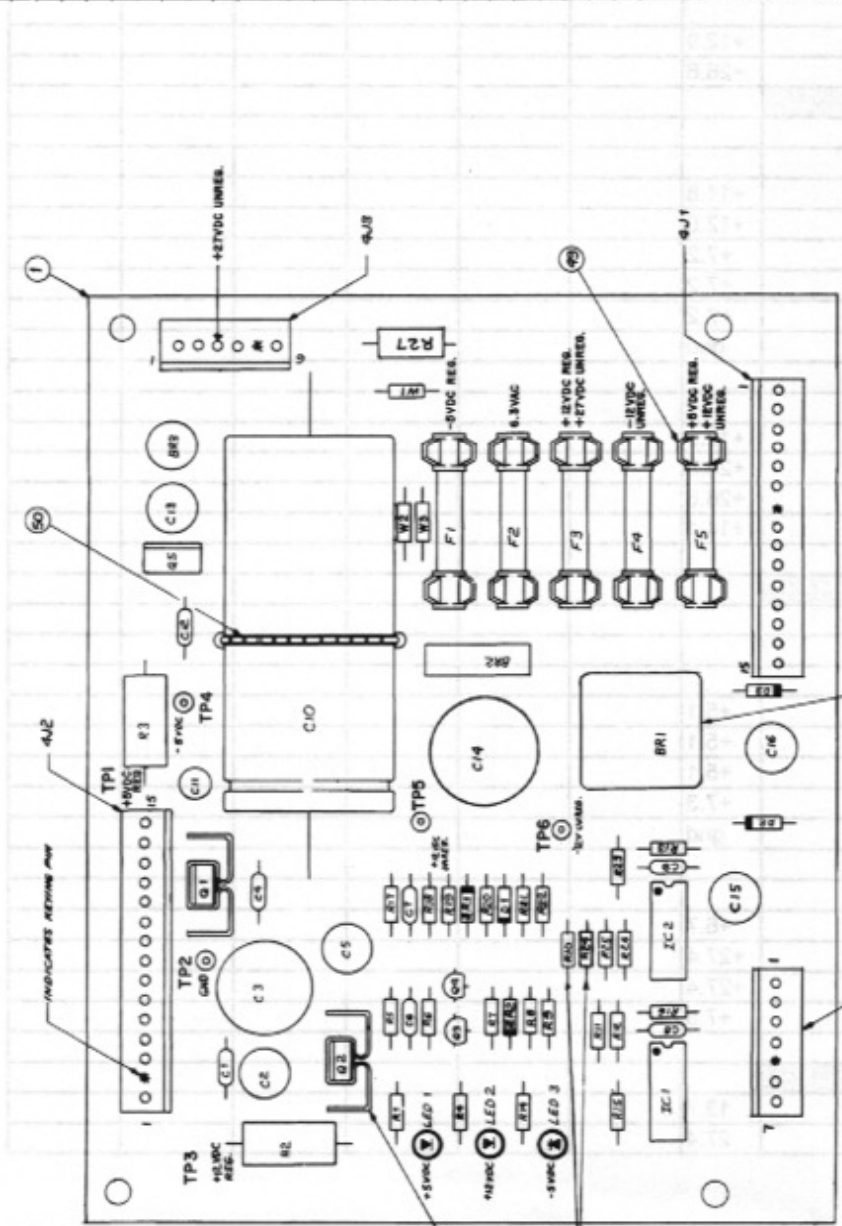


Power Supply Reference Voltages

Test Points	Spec	No Load	Load					
Test Point 1 (R1 away from LED)	+5.1							
Test Point 2	gnd							
Test Point 3 (R4 away from LED)	+12.0							
Test Point 4	-4.9							
Test Point 5	+12.8							
Test Point 6 (-12V Unreg)	-14.8							
Transistor Wires (4P4)								
Yellow	+5.3							
White	+6.7							
Green	+12.8							
Black	+12.3							
N/C								
Blue	+12.9							
Orange	+26.6							
Voltage Regulator								
IC1 - 12V Circuit								
Pin 1								
Pin 2	+11.8							
Pin 3	+12.0							
Pin 4	+7.2							
Pin 5	+7.2							
Pin 6	+7.2							
Pin 7	gnd							
Pin 8								
Pin 9								
Pin 10	+12.9							
Pin 11	+26.6							
Pin 12	+26.6							
Pin 13	+14.1							
Pin 14								
Voltage Regulator								
IC2 - 5V Circuit								
Pin 1								
Pin 2								
Pin 3	+5.1							
Pin 4	+5.1							
Pin 5	+5.1							
Pin 6	+7.3							
Pin 7	gnd							
Pin 8								
Pin 9								
Pin 10	+6.7							
Pin 11	+27.4							
Pin 12	+27.4							
Pin 13	+7.9							
Pin 14								
Diodes								
D2	13.7							
D3	27.4							

BILL OF MATERIAL

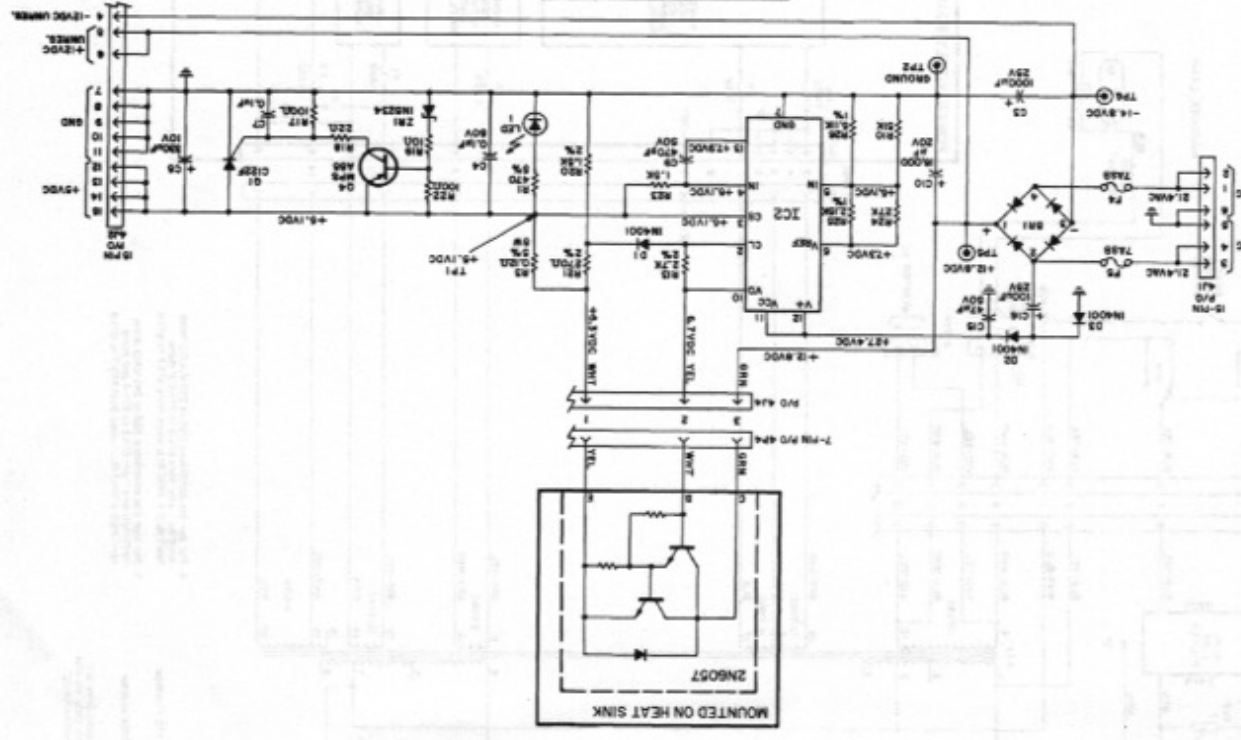
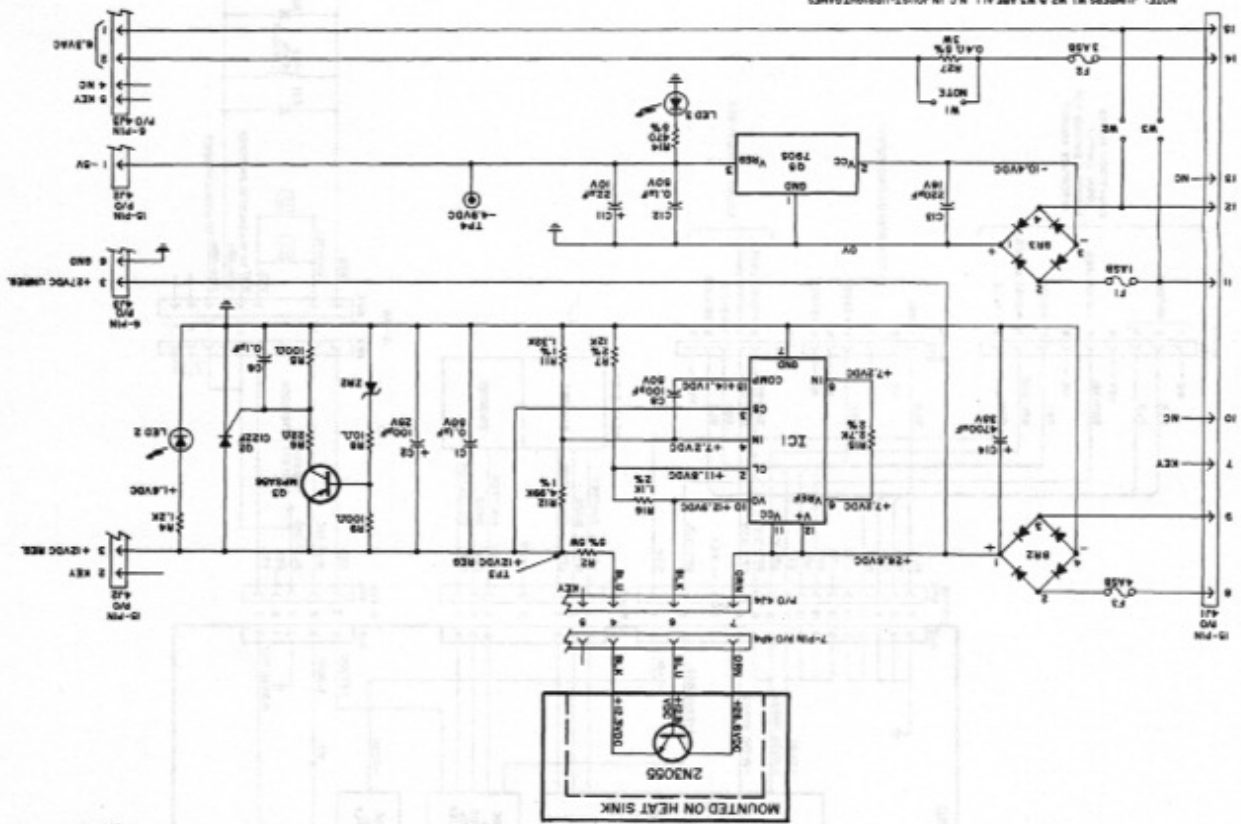
ITEM NO.	PART NO.	PART DESCRIPTION	QUANTITY	UNIT
1	5773-00	BASE P.C. BOARD	1	PCB
2	5010-00	RESISTOR, 1/4 W	1	RES
3	5010-00	RESISTOR, 1/4 W	2	RES
4	5010-00	RESISTOR, 1/4 W	1	RES
5	5010-00	RESISTOR, 1/4 W	1	RES
6	5010-00	RESISTOR, 1/4 W	1	RES
7	5010-00	RESISTOR, 1/4 W	1	RES
8	5010-00	RESISTOR, 1/4 W	1	RES
9	5010-00	RESISTOR, 1/4 W	2	RES
10	5010-00	RESISTOR, 1/4 W	1	RES
11	5010-00	RESISTOR, 1/4 W	1	RES
12	5010-00	RESISTOR, 1/4 W	1	RES
13	5010-00	RESISTOR, 1/4 W	1	RES
14	5010-00	RESISTOR, 1/4 W	1	RES
15	5010-00	RESISTOR, 1/4 W	1	RES
16	5010-00	RESISTOR, 1/4 W	1	RES
17	5010-00	RESISTOR, 1/4 W	2	RES
18	5010-00	RESISTOR, 1/4 W	4	RES
19	5010-00	RESISTOR, 1/4 W	2	RES
20	5010-00	RESISTOR, 1/4 W	1	RES
21	5010-00	RESISTOR, 1/4 W	2	RES
22	5010-00	RESISTOR, 1/4 W	2	RES
23	5010-00	RESISTOR, 1/4 W	1	RES
24	5010-00	RESISTOR, 1/4 W	1	RES
25	5010-00	RESISTOR, 1/4 W	1	RES
26	5010-00	RESISTOR, 1/4 W	1	RES
27	5010-00	RESISTOR, 1/4 W	1	RES
28	5010-00	RESISTOR, 1/4 W	3	RES
29	5010-00	RESISTOR, 1/4 W	1	RES
30	5010-00	RESISTOR, 1/4 W	1	RES
31	5010-00	RESISTOR, 1/4 W	1	RES
32	5010-00	RESISTOR, 1/4 W	1	RES
33	5010-00	RESISTOR, 1/4 W	3	RES
34	5010-00	RESISTOR, 1/4 W	1	RES
35	5010-00	RESISTOR, 1/4 W	1	RES
36	5010-00	RESISTOR, 1/4 W	2	RES
37	5010-00	RESISTOR, 1/4 W	2	RES
38	5010-00	RESISTOR, 1/4 W	1	RES
39	5010-00	RESISTOR, 1/4 W	2	RES
40	5010-00	RESISTOR, 1/4 W	1	RES
41	5010-00	RESISTOR, 1/4 W	1	RES
42	5010-00	RESISTOR, 1/4 W	1	RES
43	5010-00	RESISTOR, 1/4 W	3	RES
44	5010-00	RESISTOR, 1/4 W	1	RES
45	5010-00	RESISTOR, 1/4 W	2	RES
46	5010-00	RESISTOR, 1/4 W	1	RES
47	5010-00	RESISTOR, 1/4 W	1	RES
48	5010-00	RESISTOR, 1/4 W	1	RES
49	5010-00	RESISTOR, 1/4 W	1	RES
50	5010-00	RESISTOR, 1/4 W	1	RES
51	5010-00	RESISTOR, 1/4 W	2	RES
52	5010-00	RESISTOR, 1/4 W	1	RES
53	5010-00	RESISTOR, 1/4 W	1	RES
54	5010-00	RESISTOR, 1/4 W	1	RES
55	5010-00	RESISTOR, 1/4 W	1	RES



ITEM NO.	PART NO.	PART DESCRIPTION	QUANTITY	UNIT
45	5010-00	RESISTOR, 1/4 W	2	RES
46	5010-00	RESISTOR, 1/4 W	1	RES
47	5010-00	RESISTOR, 1/4 W	1	RES
48	5010-00	RESISTOR, 1/4 W	1	RES
49	5010-00	RESISTOR, 1/4 W	1	RES
50	5010-00	RESISTOR, 1/4 W	1	RES
51	5010-00	RESISTOR, 1/4 W	2	RES
52	5010-00	RESISTOR, 1/4 W	1	RES
53	5010-00	RESISTOR, 1/4 W	1	RES
54	5010-00	RESISTOR, 1/4 W	1	RES
55	5010-00	RESISTOR, 1/4 W	1	RES

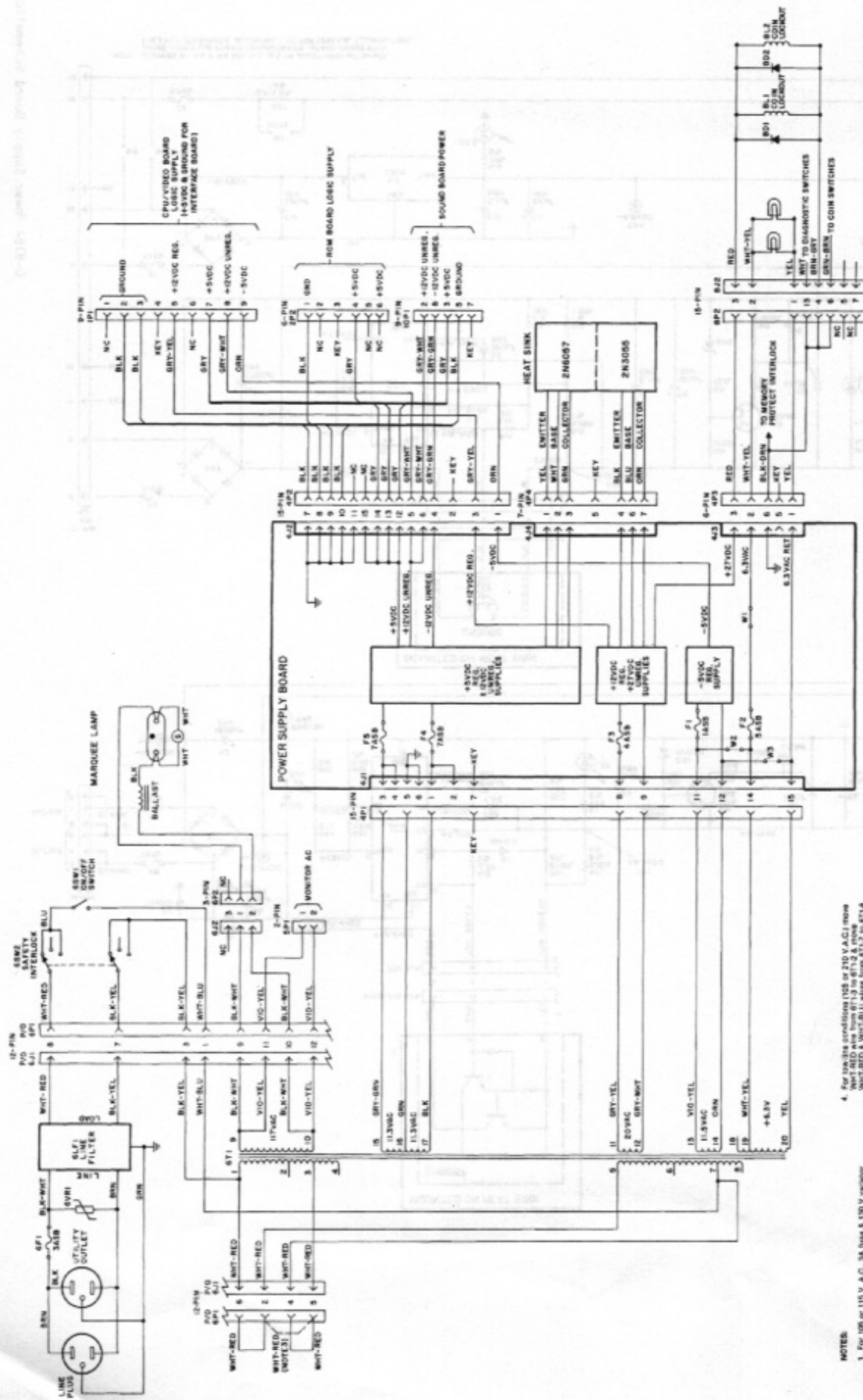
NOTES:
 1. REMOVE AREA IF +5VDC IS GREATER THAN 5.25 VDC.
 2. REMOVE AREA IF +5VDC IS LESS THAN 4.75 VDC.
 3. BR1 MUST BE MOUNTED 7/8" ABOVE SURFACE OF BOARD.
 4. FOR SCHEMATIC REFER TO 16-8811.

NOTE: JUMPERS W1, W2 AND W3 ARE ALL "N.C." IN JUST-UPRIGHT GAMES. THESE GAMES USE POWER TRANSFORMER 6850-08668 WITH 12.5VCT SECONDARY, ALLOWING 6.2V FOR GENERAL ILLUMINATION.



100% REPRODUCIBLE

100% REPRODUCIBLE



- NOTES:**
- For 105 or 115 V. A.C., 3A. fuses & 120 V. resistor 9017-0004 are used.
 - For 210 or 225 V.A.C., 1A. fuses & 275V. resistor 9017-0003 are used.
 - Amperes wires on pins shown with solid lines are connected for 117 V.A.C. operation. Only the wire shown with a dashed line is connected for 220 V.A.C. operation.
 - For high line conditions (105 or 115 V. A.C.) from WHIT-RED wire from BT1.3 to BT1.2 and WHIT-RED & WHIT-BLU wires from BT1.7 to BT1.4
 - For high line conditions (105 or 220 V.A.C.) from WHIT-RED wire from BT1.3 to BT1.4 and from WHIT-RED & WHIT-BLU wires from BT1.7 to BT1.4

Power Wiring Diagram